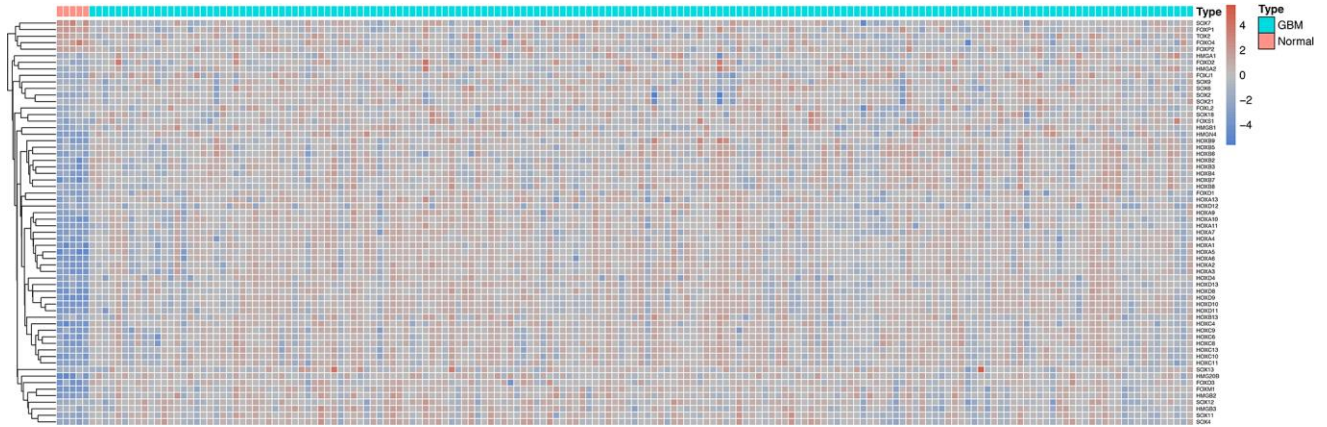
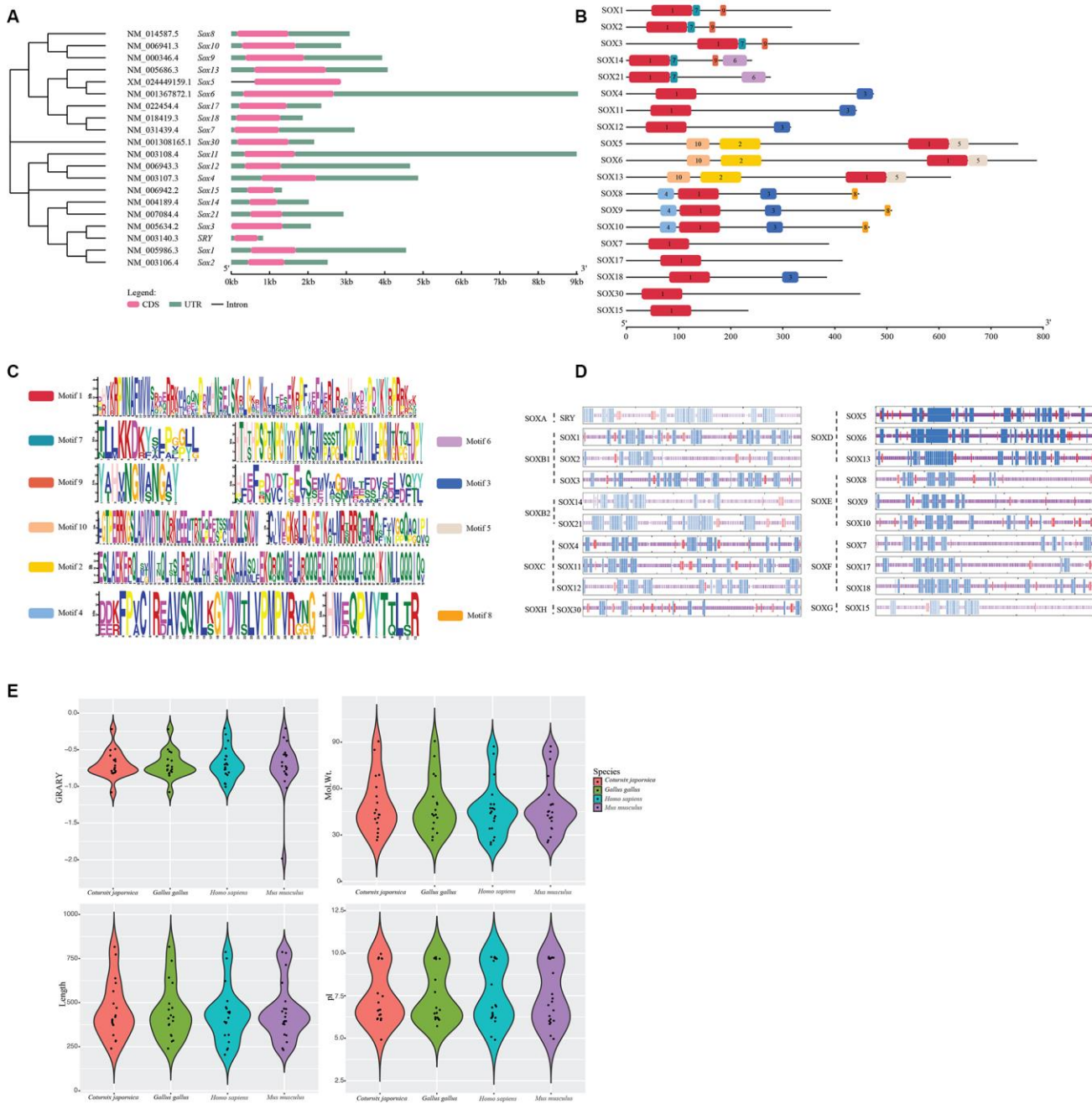


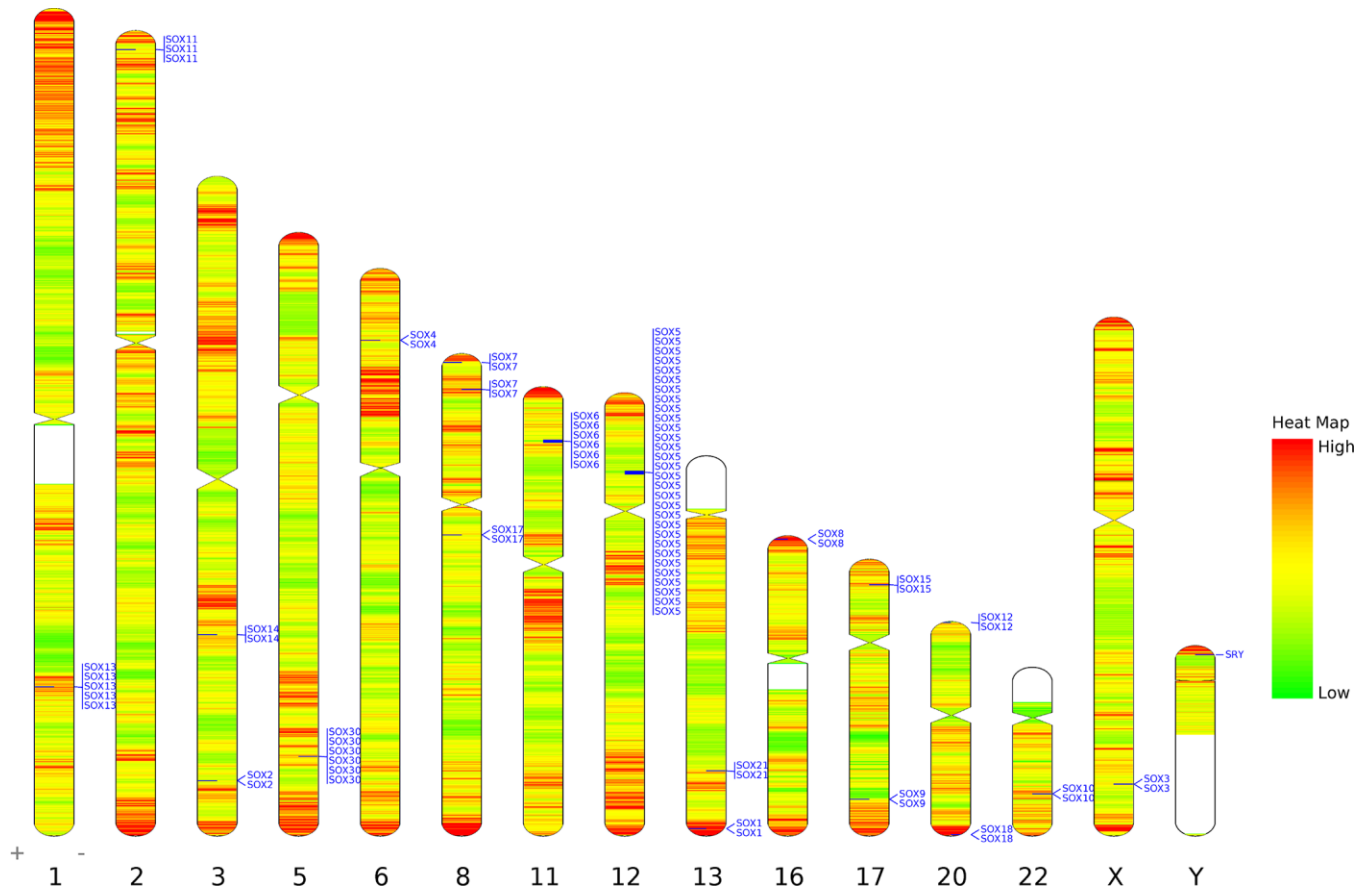
SUPPLEMENTARY FIGURES



Supplementary Figure 1. Heatmap for HMG-box related genes between GBM and normal tissue in TCGA. Starting from the left, the first 5 datasets were normal tissues, and the remaining 169 were GBM tissues.



Supplementary Figure 2. Structures analyses of SOX gene family in humans. (A) Phylogenetic and protein structures analyses of SOX gene family in humans. (B and C) SOX motif prediction. (D) SOX protein secondary structures in humans. The α -helix, β -sheet and disordered loop regions are drawn in blue, red and purple, respectively. (E) Protein properties for SOX genes identified from *Homo sapiens*, *Mus musculus*, *Coturnix japonica*, and *Gallus gallus*.



Supplementary Figure 3. Distribution of the SOX gene family on human chromosomes.