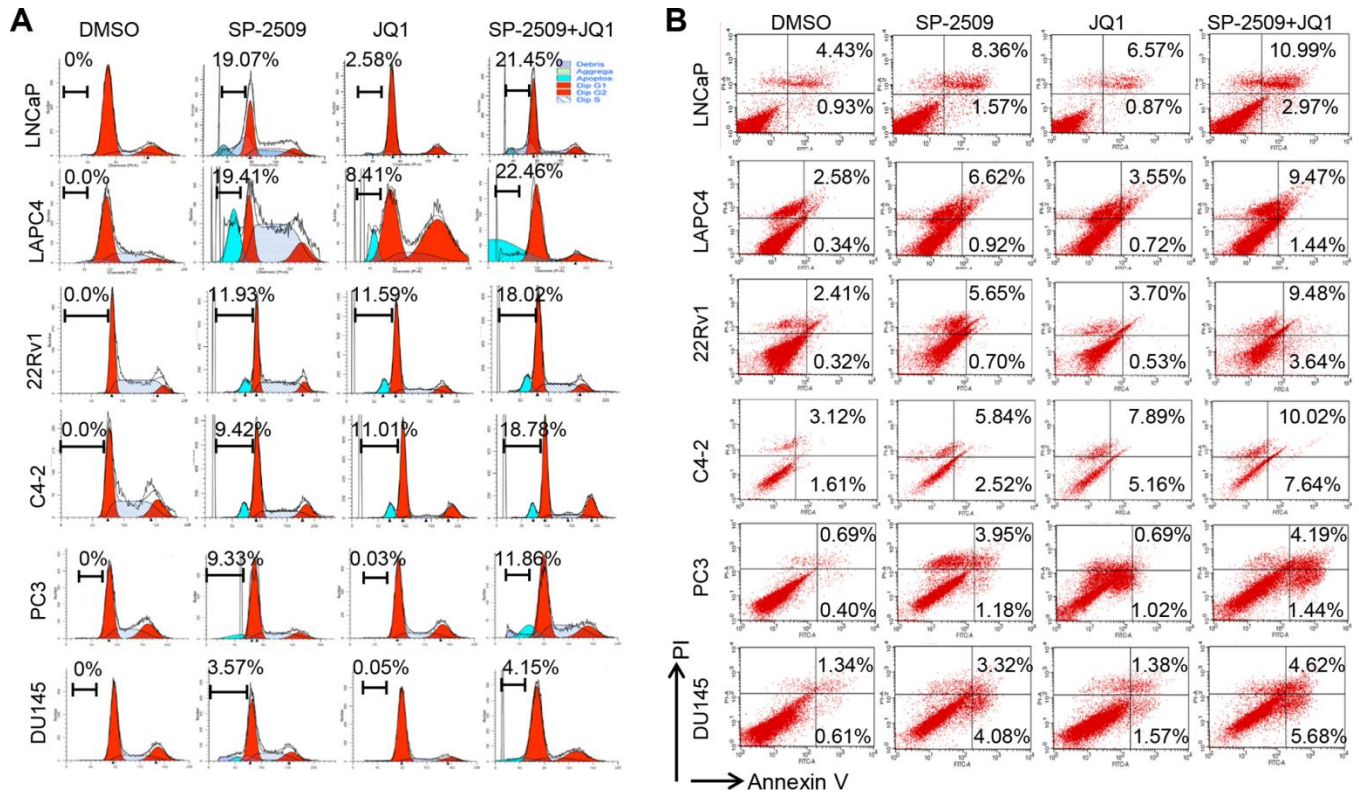
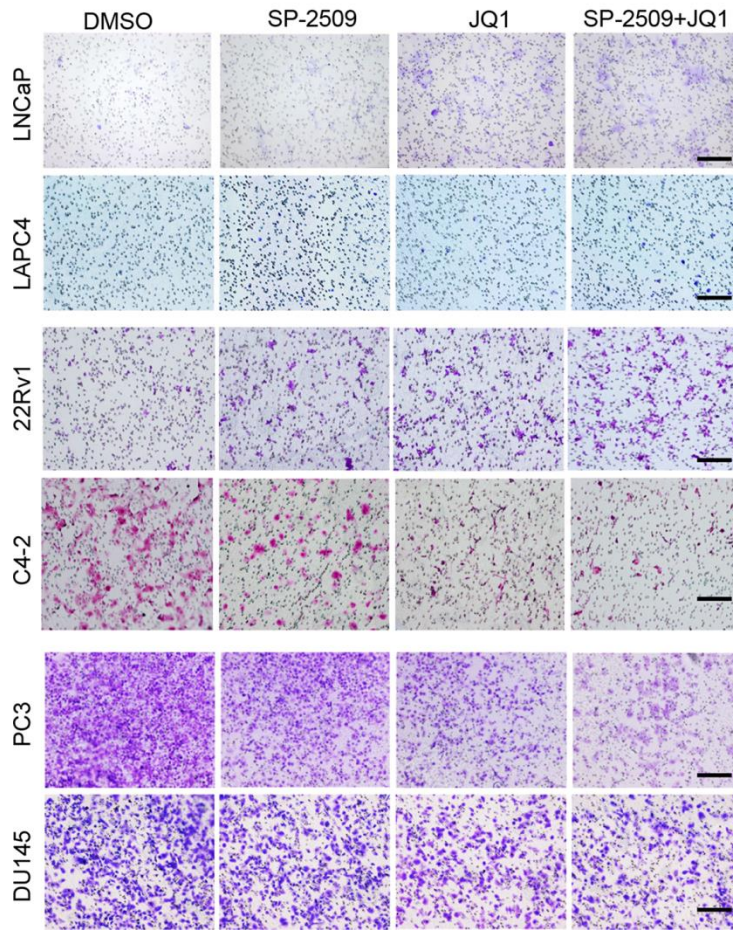


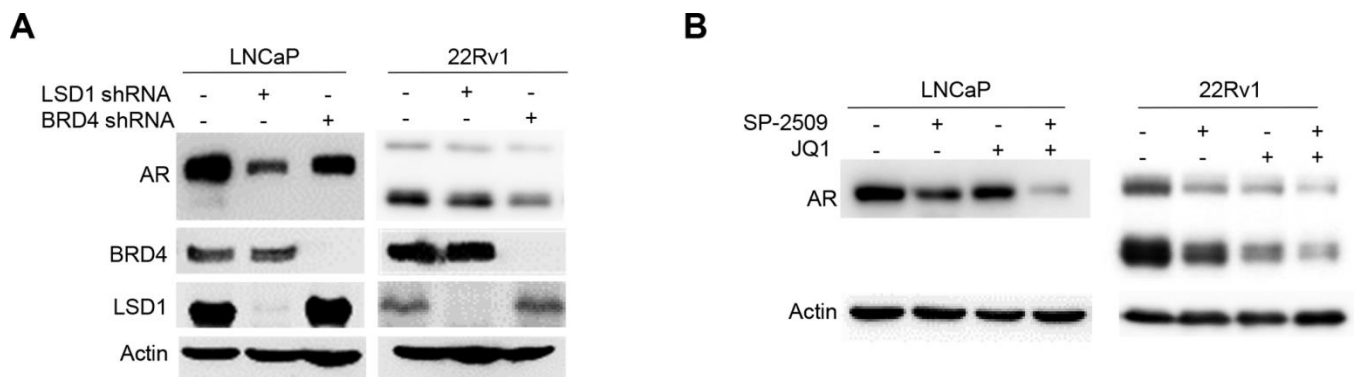
**SUPPLEMENTARY FIGURES**



**Supplementary Figure 1. Inhibition of LSD1 and BRD4 has different effects on three subtypes of Prostate Cancer.** Cell death analysis in LNCaP, LAPC4, 22Rv1, C4-2, PC3 and DU145 cells after 72 h treatment with 1  $\mu$ M JQ1 or SP-2509 alone, or in combination. Cell death was assessed using propidium iodide (PI) staining (A) or apoptosis was assessed using Annexin-V and PI staining (B) followed by FACS analysis. A representative image is shown.



Supplementary Figure 2. The cell invasion analysis was performed after treatment. Representative images are show.



Supplementary Figure 3. Inhibition of LSD1 or BRD4 reduces AR expression. (A) knock-down of LSD1 or BRD4 and western blot analysis for AR expression. (B) Cells were treated with 1  $\mu$ M JQ1 or SP-2509 alone, or in combination for 72 h. Total protein lysates were analyzed by immunoblot using the indicated antibodies.